

navCenter Commons
Preliminary Layout
Johnsonville Sausage, LLC
P.O. Box 906
Sheeboygan Falls, WI 53086

© COPYRIGHT 2009 MG TAYLOR CORPORATION AND ARCHITECTURE.
ALL RIGHTS RESERVED. NO PART OF THIS DOCUMENT OR ANY
INTELLECTUAL PROPERTY WHICH CONSTITUTES A VESTED INTEREST
IN THIS PROJECT.

REVISIONS	
NO.	DATE

PROJECT NO. 12.008
DATE: FEB. 2, 2009

CS

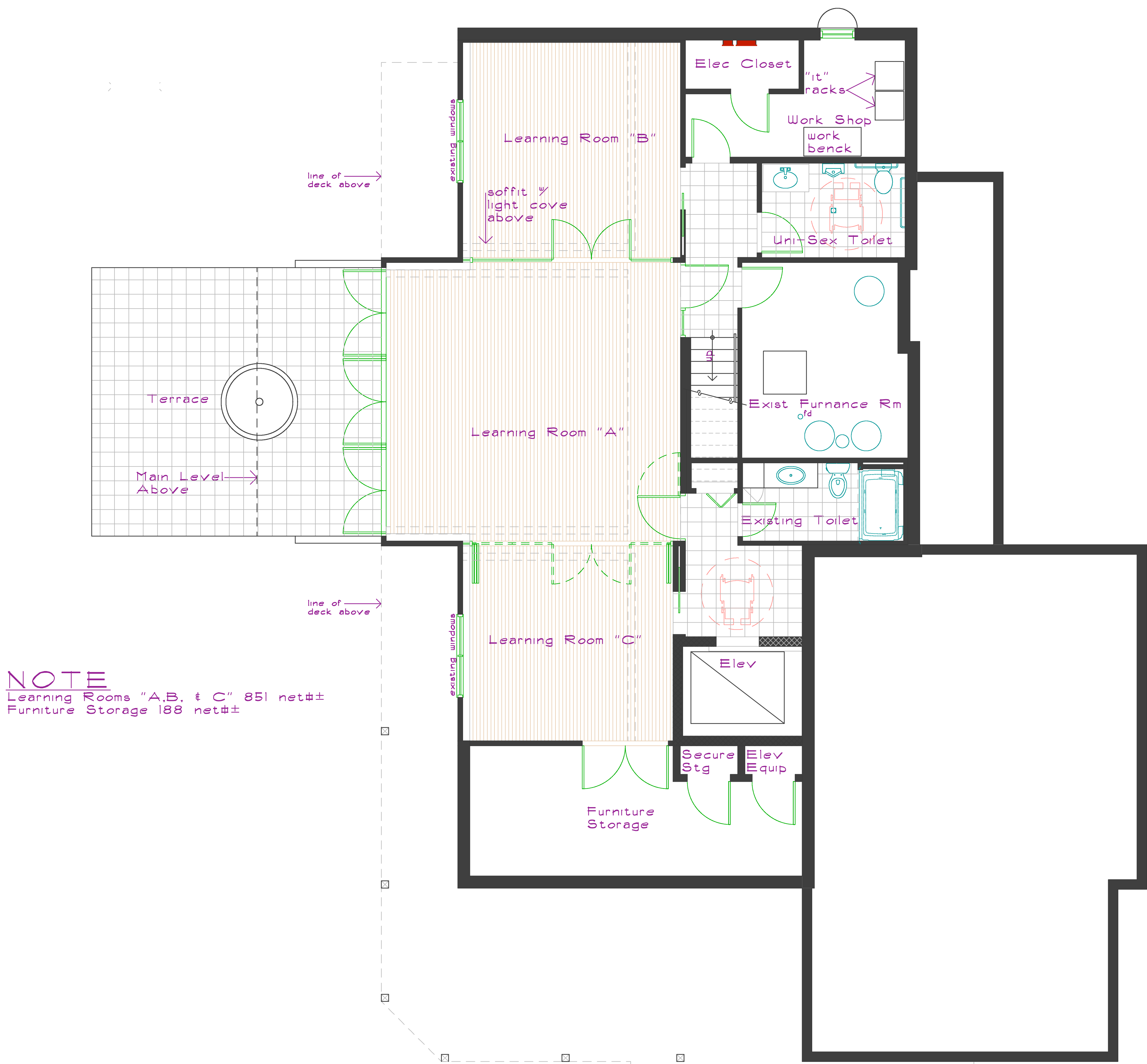
SHEET 1 OF 4

navCenter COMMONS
JOHNSONVILLE SAUSAGE, LLC
COUNTY ROAD J
JOHNSONVILLE, WI

TSM ARCHITECTURE
a DIVISION of
MG TAYLOR CORPORATION
3401 West End Avenue
Suite 100
Nashville, TN 37203-6859
615.299.6572

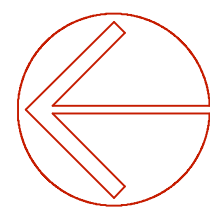


one-eighth inch = one foot
one-quarter inch = one foot
three-eighths inch = one foot
one-half inch = one foot
three-quarters inch = one foot
one inch = one foot
one and one-half inches = one foot
three inches = one foot



NOTE
Learning Rooms "A,B, & C" 851 net#±
Furniture Storage 188 net#±

LOWER LEVEL FLOOR PLAN
scale 1/4" = 1'-0"
1,859 gross#± approximately



© COPYRIGHT 2009 MG TAYLOR CORPORATION AND ARCHITECTURE. ALL RIGHTS RESERVED. THIS DRAWING IS THE PROPERTY OF MG TAYLOR CORPORATION AND ARCHITECTURE. IT IS TO BE USED ONLY FOR THE PROJECT AND SITE SPECIFICALLY IDENTIFIED HEREIN. ANY REUSE OR MODIFICATION OF THIS DRAWING WITHOUT THE WRITTEN CONSENT OF MG TAYLOR CORPORATION AND ARCHITECTURE IS PROHIBITED.

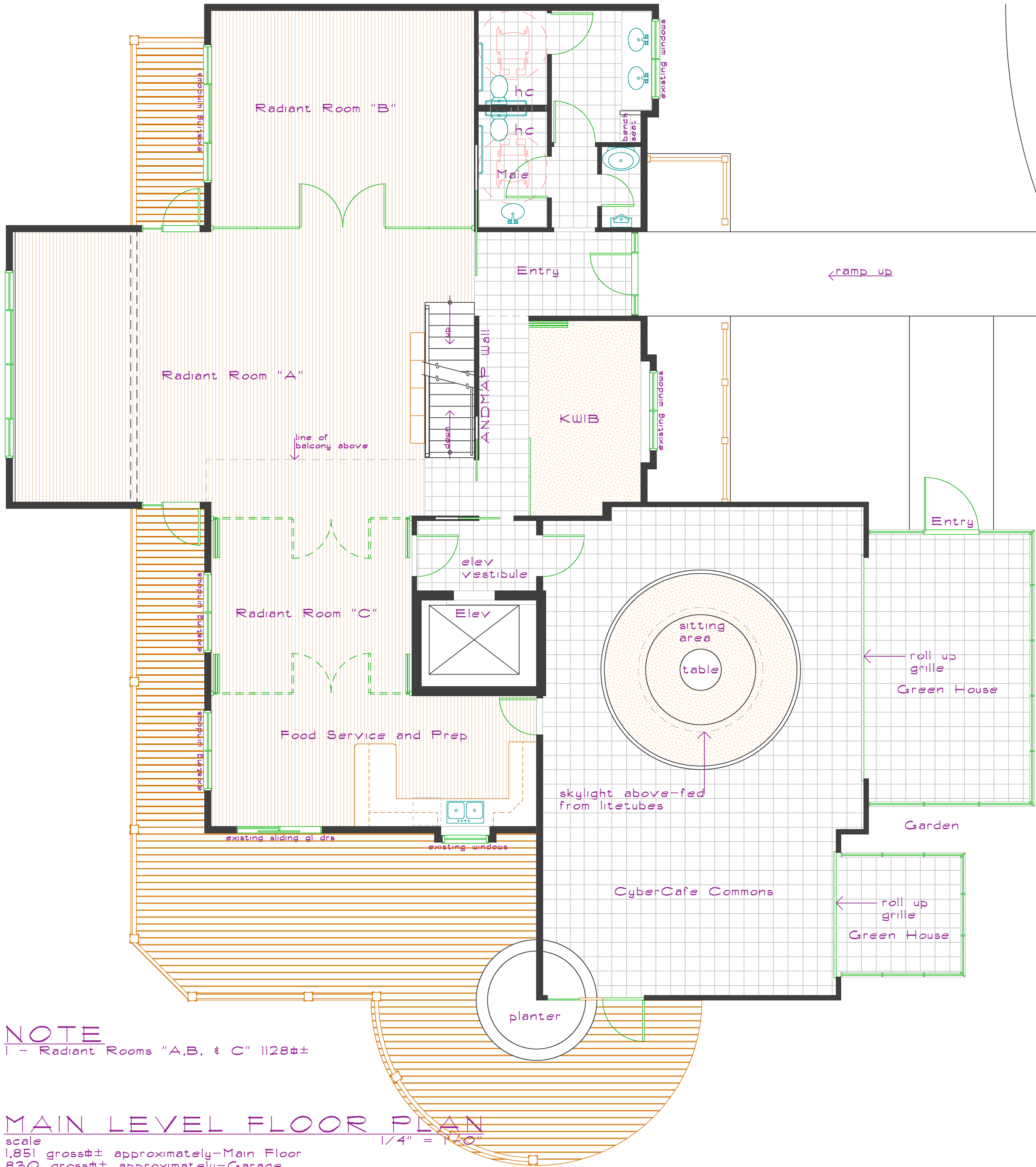
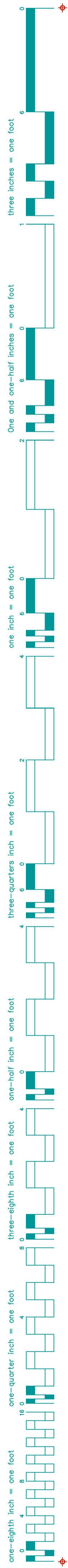
navCenter COMMONS
JOHNSONVILLE SAUSAGE, LLC
COUNTY ROAD J
JOHNSONVILLE, WI

REVISIONS	NO.	DATE

PROJECT NO. 12.008
DATE: FEB. 2, 2009
A-1.1
SHEET 2 OF 4

TSM
ARCHITECTURE

TSM ARCHITECTURE
a DIVISION of
MG TAYLOR CORPORATION
3401 West End Avenue
Suite 100
Nashville, TN 37203-6859
615.299.6572



NOTE
1 - Radiant Rooms "A,B, & C" 1128#±

MAIN LEVEL FLOOR PLAN
scale 1/4" = 1'-0"
1,851 gross#± approximately-Main Floor
830 gross#± approximately-Garage
470 gross#± approximately-Deck
4,561 gross#± approximately-Livable Area

PRINTED: 02/10/09 23:54 G:\PROJECTS\Johnsonville Sausage\Drawings\JS Presentation Rev 020809

COPYRIGHT 2009 MG TAYLOR CORPORATION AND ARCHITECTURE, INC. ALL RIGHTS RESERVED. NO PART OF THIS PUBLICATION OR THE INFORMATION CONTAINED HEREIN MAY BE REPRODUCED OR TRANSMITTED IN ANY FORM OR BY ANY MEANS, ELECTRONIC OR MECHANICAL, INCLUDING PHOTOCOPYING, RECORDING, OR BY ANY INFORMATION STORAGE AND RETRIEVAL SYSTEM, WITHOUT PERMISSION IN WRITING FROM TSM ARCHITECTURE, A DIVISION OF MG TAYLOR CORPORATION.

navCenter COMMONS
JOHNSONVILLE SAUSAGE, LLC
COUNTY ROAD J
JOHNSONVILLE, WI

REVISIONS
NO. DATE

PROJECT NO. 12.008
DATE: FEB. 2, 2009

A-1.2

SHEET 3 OF 4

TSM
ARCHITECTURE

TSM ARCHITECTURE
a DIVISION of
MG TAYLOR CORPORATION
3401 West End Avenue
Suite 100
Nashville, TN 37203-6859
615.299.6572

one-eighth inch = one foot
one-quarter inch = one foot
one-half inch = one foot
three-eighths inch = one foot
one inch = one foot
one and one-half inches = one foot
three inches = one foot

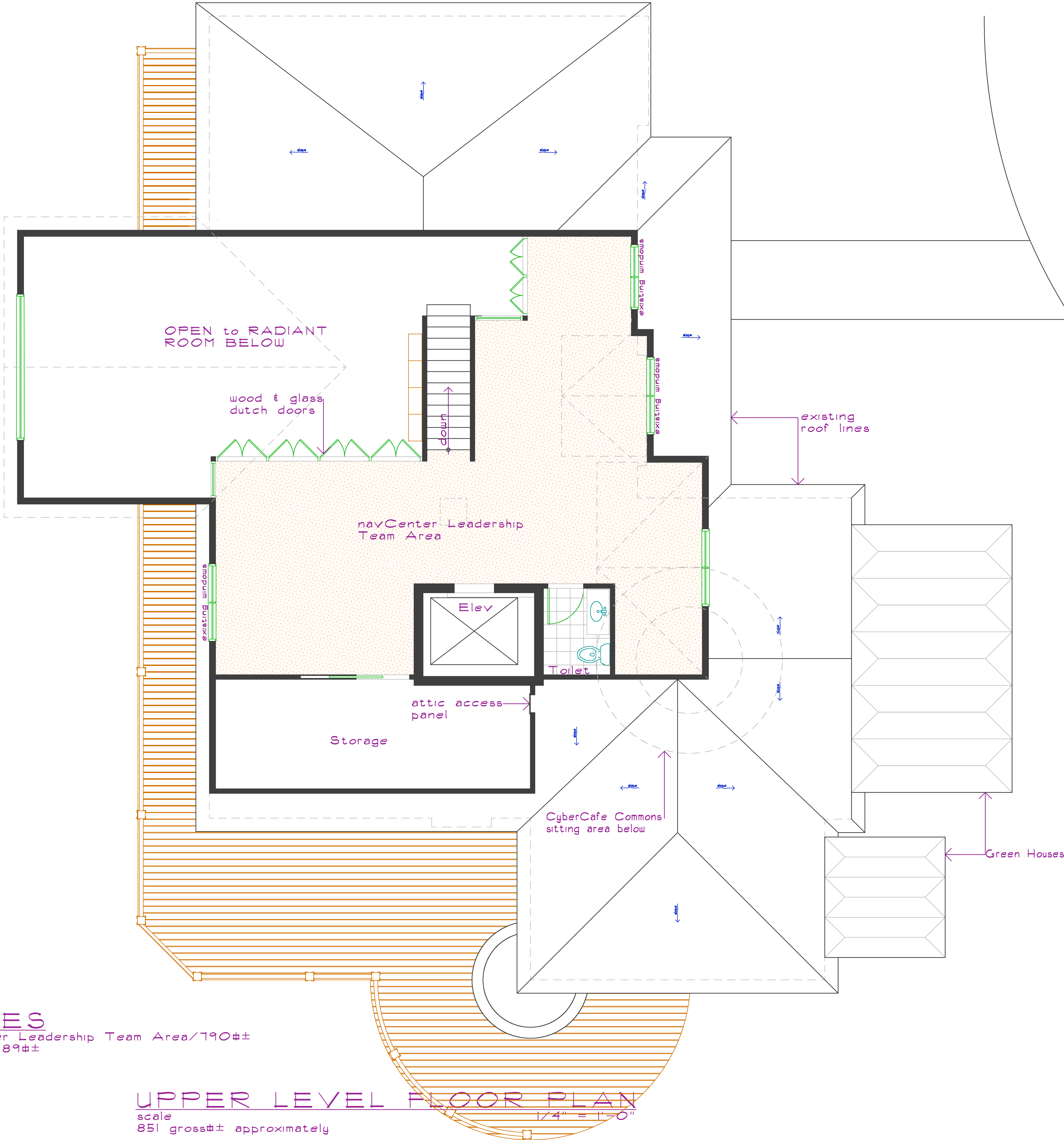
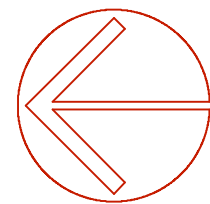
NOTES

navCenter Leadership Team Area/190#±
Storage/189#±

UPPER LEVEL FLOOR PLAN

scale
851 gross#± approximately
1/4" = 1'-0"

PRINTED: 02/10/09 23:54 G:\PROJECTS\Johnsonville Sausage\Drawings\JS Presentation Rev 020809



© COPYRIGHT 2009 MG TAYLOR CORPORATION AND ARCHITECTURE. ALL RIGHTS RESERVED. NO PART OF THIS PUBLICATION MAY BE REPRODUCED OR TRANSMITTED IN ANY FORM OR BY ANY MEANS, WITHOUT PERMISSION IN WRITING FROM MG TAYLOR CORPORATION. THIS DOCUMENT IS THE PROPERTY OF TSM ARCHITECTURE, A DIVISION OF MG TAYLOR CORPORATION, AND IS TO BE USED ONLY FOR THE PROJECT AND SITE SPECIFICALLY IDENTIFIED IN THIS PROJECT.

REVISIONS
NO. DATE

PROJECT NO. 12.008
DATE: FEB. 2, 2009

A-1.3
SHEET 4 OF 4

navCenter COMMONS
JOHNSONVILLE SAUSAGE, LLC
COUNTY ROAD J
JOHNSONVILLE, WI

TSM ARCHITECTURE
a DIVISION of
MG TAYLOR CORPORATION
3401 West End Avenue
Suite 100
Nashville, TN 37203-6859
615.299.6572

TSM
ARCHITECTURE